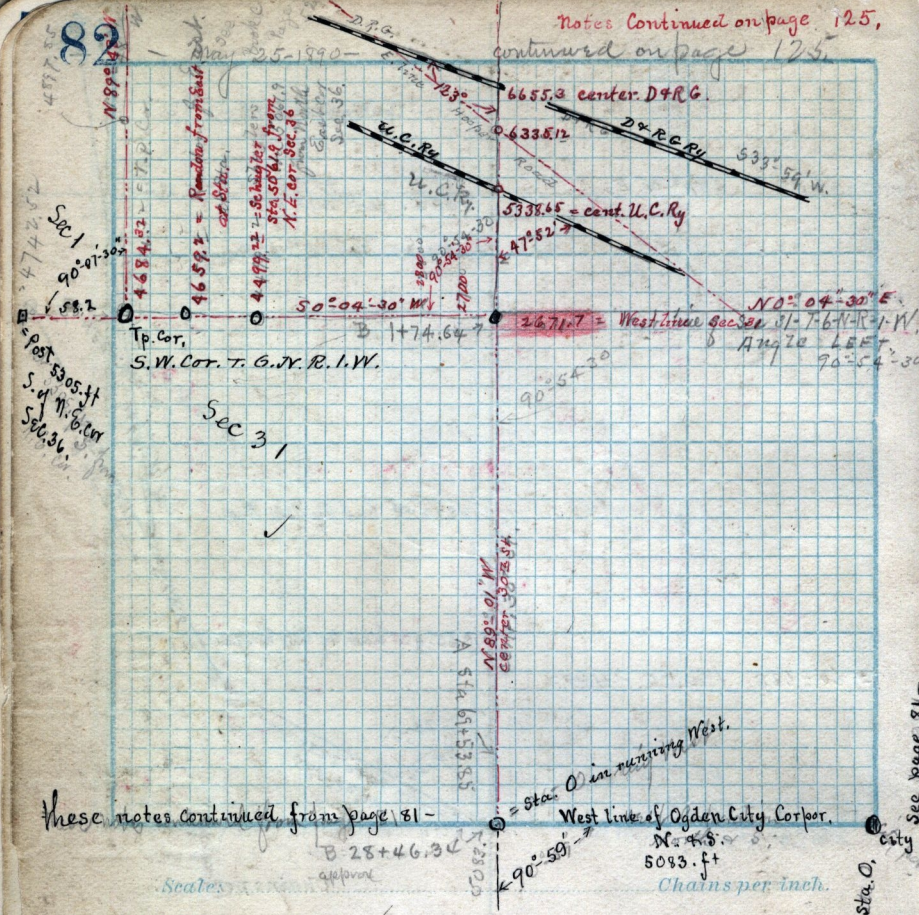


Notes Continued on page 125,

continued on page 125.



These notes continued from page 81 -

B 2846.34 approx

West line of Ogden City, Corpor.  
N 4.5' S  
5083. ft  
Chains per inch.

Lots 21-22 in Block 2 - Woodmansee's Main St. Addition to Ogden City Thomas E. Woodmansee foundation to be set out 25 ft from West line 4 feet from North line

Copy of deed from Martha W. Kempton to Thomas J. Wilson Dec. 9-1890 - U-405 - P4 N.W. 1/4 Sec. 25 - T-6-N-R-2-W, B.E. 12.45 ch W. from S.E. cor. said 1/4 Sec. thence W 1.94 ch N 39.20 S.E. to point 36.00 ch N. from beg. South to beg. 7.3/10 acres, make description of and survey all that part of the above lying North of the line

See page 81 - city